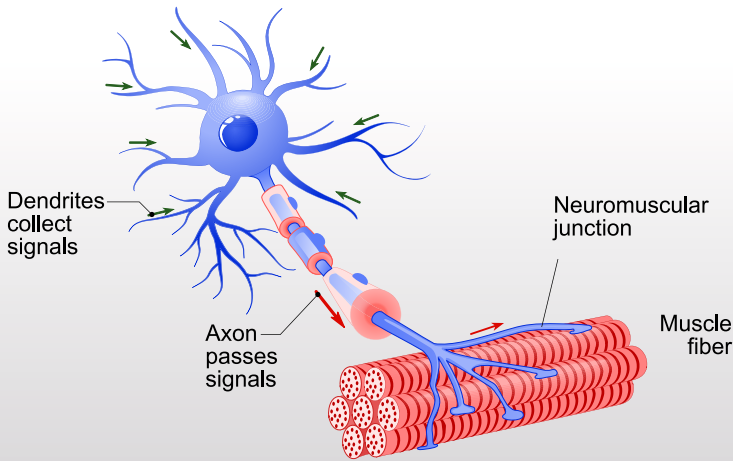


# EMG

An invasive diagnostic procedure to assess the health of muscles and the nerve cells that control them (motor neurons).



- 1.** Inform your doctor if you are on blood thinners or have a history of bleeding tendencies.
- 2.** The procedure takes around 1 to 2 hours depending upon the number of muscles to be tested.
- 3.** During the procedure, a small, thin needle electrode is inserted into several muscles to look for the disease, while electrographic readings will be taken.
- 4.** You may feel slight pain or minor bleeding around the electrode insertion point during the test.
- 5.** Reports will be issued in one hour, post procedure, at the reception.